

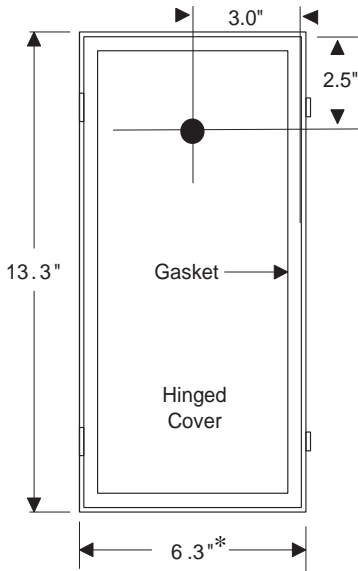


## NEMA 4/4X Type Enclosure



**Application:** Our NEMA 4/4X Type Enclosure (N4-ENC) is custom machined to fit most ball, butterfly or globe valve assemblies with a single commercial actuator. Some dual commercial actuators fit into one enclosure. Call DEI for details. The enclosure is designed for indoor or outdoor use to provide primarily a degree of protection against corrosion, windblown dust and rain, and splashing or hose directed water; undamaged by the formation of ice on the enclosure.

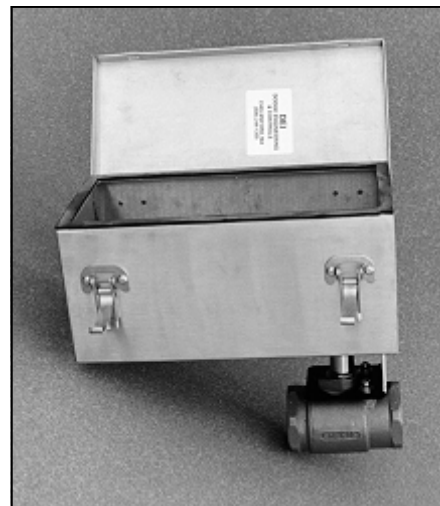
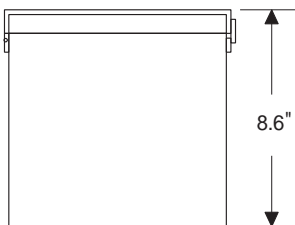
The enclosure is suitable for both indoor and outdoor use in a variety of applications including dairies, breweries, manufacturing areas, waste-water treatment plants, greenhouses, etc.



**Construction:** The enclosure is constructed of sturdy marine grade aluminum .080-inch (2 millimeters) thick. Any seams are continuously welded and ground smooth, and a corrosion resistant coating is applied to the entire enclosure for an extra degree of protection. The cover is secured with two quick release latches which allow easy access for maintenance.

**Options:** Heater and Stat option is available for extreme conditions.

Shaft Seal options are 1/2" or 5/8". Specify shaft size when ordering. Custom sizes are available.



**Notes:**

- For dual applications contact DEI for confirmation on number of enclosures required.
- \* Leave additional 6.5" to open cover fully. Leave extra width for the hinges, clamps and for opening lid.



## Actuator Weather Shield



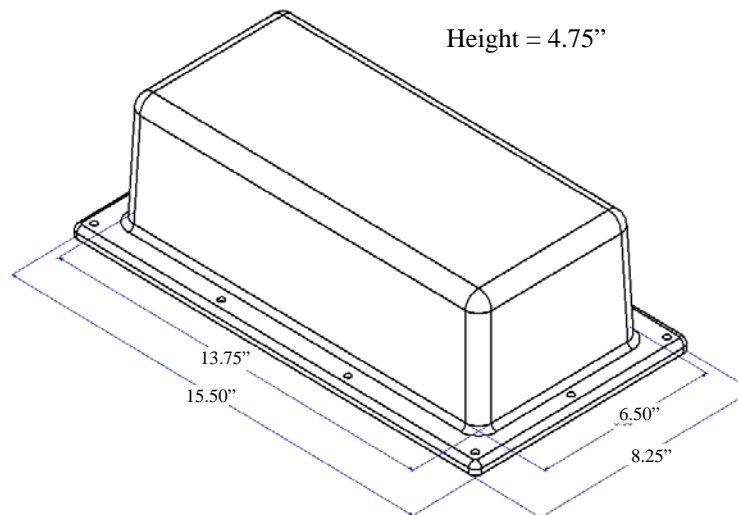
**Application:** DEI's Weather Shield (WS-1) provides a cost effective solution to indoor or outdoor applications requiring protection against moisture or rain. The enclosure can be used for damper or valve applications requiring a single actuator. For applications requiring tandem mount actuators, use DEI's Nema 4/4X type motor enclosure found on page AS-1 of our catalog.

**Construction:** The enclosure is constructed of rugged ABS material which is co-extruded with a UV Resistant Coating. The enclosure is white to minimize solar heat gain to the actuator. A gasket is provided to achieve a tight seal between the base of the enclosure and the aluminum mounting plate.

**Options:** Heater and Stat is available for extreme conditions.

**Installation:** Can be installed vertically or horizontally. Do NOT install upside down.

**Dimensions:**





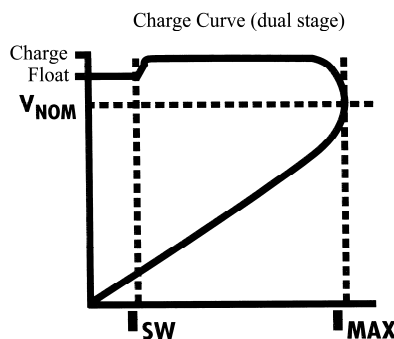
## Automatic Battery Backup Charger for Non-Spring Return Actuators (for use with Lead-Acid Batteries)

**General Operation:** This unit is a two stage, constant voltage battery charger with current limiting, current fold back, and automatic temperature compensation of the output voltage. It is protected against shorting the output terminals and reversing the output terminals on a battery. It is equipped with an IEC-320 type power input module with fuse holder and a spare fuse. There is an input voltage selection switch located above the input module to select between 115 VAC and 230 VAC. The unit has a full metal enclosure to ensure field reliability.

This unit is designed to switch automatically into a single stage, float charge mode when the battery is charged. A single stage, parallel charger version is available for keeping a battery fully charged when used with a permanent or intermittent parallel load. The use of an optional low voltage cut out is recommended when using parallel loads. This unit is not designed to operate as a standalone power supply.

**Indicators:** There is one indicator light on the front panel. Green indicates when power is applied, battery is attached, and that the charger is in float mode. Yellow indicates when the unit is charging on the battery. Red indicates a fault condition (shorted or reversed output connector).

Technical Data (at 77°F/25°C)	Part No. BB24D-1.0
	24 V
Power requirements	115/230 VAC, 50/60 Hz, 0.52 A RMS
Input fuse type	5 x 20 mm fast acting, miniature glass fuse, UL & CSA approved
Charge amps	1 A ± 2% @ 24 V
Charge voltage	29.40 ± 0.60 VDC
Float voltage	27.36 ± 0.24 VDC
Switch amps (ISW)*	Approx. 67 mA
Operating temperature	32°F to 93°F (0°C to 34°C)
Storage temperature	-40°F to 176°F (-40°C to 80°C)
Output cable and connects	3 ft long with insulated boots and spring clips
Power cable	6 ft long, detachable with a NEMA 5-15P plug
Dimensions	W 5.55" x H 2.90" x D 3.60"
Shipping weight	3.8 lbs



Note:

\* Dependent upon battery manufacturer.



## Accessories

NEMA 4/4X Type Enclosure ..... AS-1

Actuator Weather Shield ..... AS-2

Automatic Battery Backup Charger for Non-Spring  
Return Actuators (for use with Lead-Acid Batteries) ..... AS-3

